

**NSE Antibody**  
**Rabbit Monoclonal Antibody (Mab)**  
**Catalog # AD80105****Specification**

---

**NSE Antibody - Product info**

Application	IHC
Primary Accession	<a href="#">P09104</a>
Reactivity	Human
Host	Rabbit
Clonality	Monoclonal
Isotype	IgG
Calculated MW	47269

**NSE Antibody - Additional info**

Gene ID	2026
Gene Name	ENO2

**Other Names**

Gamma-enolase, 4.2.1.11, 2-phospho-D-glycerate hydro-lyase, Enolase 2, Neural enolase, Neuron-specific enolase, NSE, ENO2

**Dilution**

IHC~~Ready-to-use

**Storage**

Maintain refrigerated at 2-8°C

**Precautions**

**NSE Antibody is for research use only and not for use in diagnostic or therapeutic procedures.**

**NSE Antibody - Protein Information**

**Name** ENO2 ([HGNC:3353](#))

**Function**

**Has neurotrophic and neuroprotective properties on a broad spectrum of central nervous system (CNS) neurons. Binds, in a calcium-dependent manner, to cultured neocortical neurons and promotes cell survival (By similarity).**

**Cellular Location**

**Cytoplasm. Cell membrane. Note=Can translocate to the plasma membrane in either the homodimeric (alpha/alpha) or heterodimeric (alpha/gamma) form.**

**Tissue Location**

**The alpha/alpha homodimer is expressed in embryo and in most adult tissues. The alpha/beta heterodimer and the beta/beta**

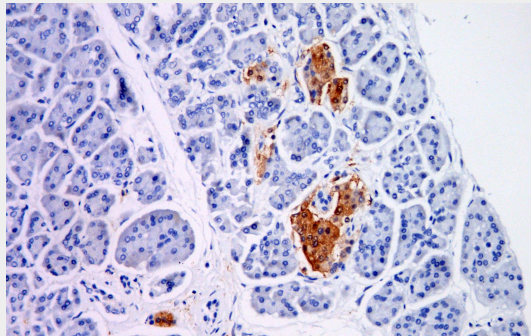
**homodimer are found in striated muscle,  
and the alpha/gamma heterodimer and the  
gamma/gamma homodimer in neurons**

## **NSE Antibody - Protocols**

Provided below are standard protocols that you may find useful for product applications.

- [Western Blot](#)
- [Blocking Peptides](#)
- [Dot Blot](#)
- [Immunohistochemistry](#)
- [Immunofluorescence](#)
- [Immunoprecipitation](#)
- [Flow Cytometry](#)
- [Cell Culture](#)

## **NSE Antibody - Images**



Immunohistochemical analysis of paraffin-embedded human pancreas tissue using AD80105 performed on the Abcarta® FAIP-30 Fully automated IHC platform. Tissue was fixed with formaldehyde at room temperature, antigen retrieval was by heat mediation with a Citrate buffer (pH6.0). Samples were incubated with primary antibody (Ready-to-use) for 15 min at room temperature. AmpSee™ Detection Systems [Abcepta:AR005] was used as the secondary antibody.